

15 mm PILOT VALVE CODING SPECIFICATION

CODE: 1 5 Z Z A A K B Y W C X X

PRODUCT FAMILY
15=15mm pilot valve

ELECTRICAL CONNECTION
S1 = Industrial 9.4mm 3 pins
D1 = DIN C 8.0mm 3 pins
C1 = Std Flying Leads (105°C)
C2 = HT Flying Leads (140°C)
M1 = M12

NOMINAL VOLTAGES
C1 = 12VDC
C2 = 24VDC
P0 = 24VAC 50/60 Hz
Other voltages available on demand

P2 = 110VAC 50/60 Hz
R5 = 220VAC 50/60 Hz
P9 = 230VAC 50/60 Hz

WINDING CONFIGURATION
(see pag4 Technical Specifications)
A = 2.5 W
B = 1.0 W
C = 3 VA
Other winding configurations available on demand

ASSEMBLING COIL-VALVE
1 = pneumatic and electrical ports on the opposite side (external seal)
2 = pneumatic and electrical ports on the same side (external seal)
4 = pneumatic and electrical ports on the opposite side (recessed seal)
5 = pneumatic and electrical ports on the same side (recessed seal)

VALVE TYPES
(see pag4 Technical Specifications)
A= 3/2 NC Ø 0.8/1.0mm
B= 3/2 NC Ø 1.1/1.5mm
C= 3/2 NC Ø 1.5/1.5mm
E= 2/2 NC Ø 1.1mm
G= 3/2 NO Ø 1.0/1.1mm
Q= 3/2 UNI

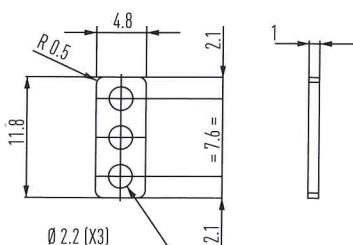
SEAL MATERIALS
N=NBR
V=FKM
F=FKM Low Temperature (-30°C)

MANUAL OVERRIDE
M=monostable (no lock) Brass
B=bistable (turn and lock) Brass
O=no override

MARKING
AM=Amisco logo and technical specifications
XX=according to customers demands
ZN=no marking

RECESSED SEAL VERSION

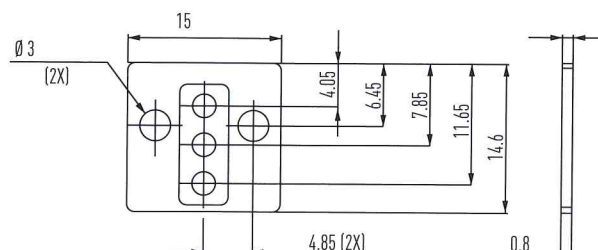
Included in valve with recessed seal
P/N 534044 (NBR)
P/N 534075 (FKM Low temperature)



ASSEMBLING EQUIPMENT - to be ordered separately

EXTERNAL SEAL VERSION

Aluminium plate + Seal
P/N 534047 (aluminium plate + NBR seal)
P/N 534076 (aluminium plate + FKM Low temperature seal)



Screw M3x18TC
(2 pcs for each pilot)
P/N 540177

Torque Max = 0.6Nm

