

IEC Appliance Inlet C14 with Filter, Fuseholder 1-pole, Line Switch 2-pole

Standard- or Medical-Filter



Aluminum



Nickel plated steel



### Description

- Panel Mount:  
Screw-on mounting from front side
- 4 Functions:  
Appliance Inlet Protection class I, Line Switch 2-pole, Fuseholder for fuse-links 5 x 20 mm 1-pole, Line-filter in standard version
- Quick connect terminals 6.3 x 0.8 mm

### Approvals

- VDE Certificate Number: 40004665
- UL File Number: E72928

### Characteristics

- Compact design with optimal shielding
- All single elements are already wired
- Plug removal necessary for fuse-link replacement  
If the power entry module is installed as normal, it is not possible to touch any live parts with the test-finger according to IEC60529  
Fuse drawer meets requirements of medical standard IEC/EN 60601-1  
The fuseholder is accessible from the equipment front
- With EMC-shield
- Suitable for use in equipment according to IEC/UL 60950  
Suitable for use in medical equipment according to IEC/UL 60601-1

### Other versions on request

- Medical version M80

### Weblinks

[pdf-datasheet](#), [html-datasheet](#), [General Product Information](#), [RoHS](#), [CHINA-RoHS](#), [REACH](#), [Mating Connectors](#), [e-Shop](#), [SCHURTER-Stock-Check](#), [Distributor-Stock-Check](#), [Accessories](#)

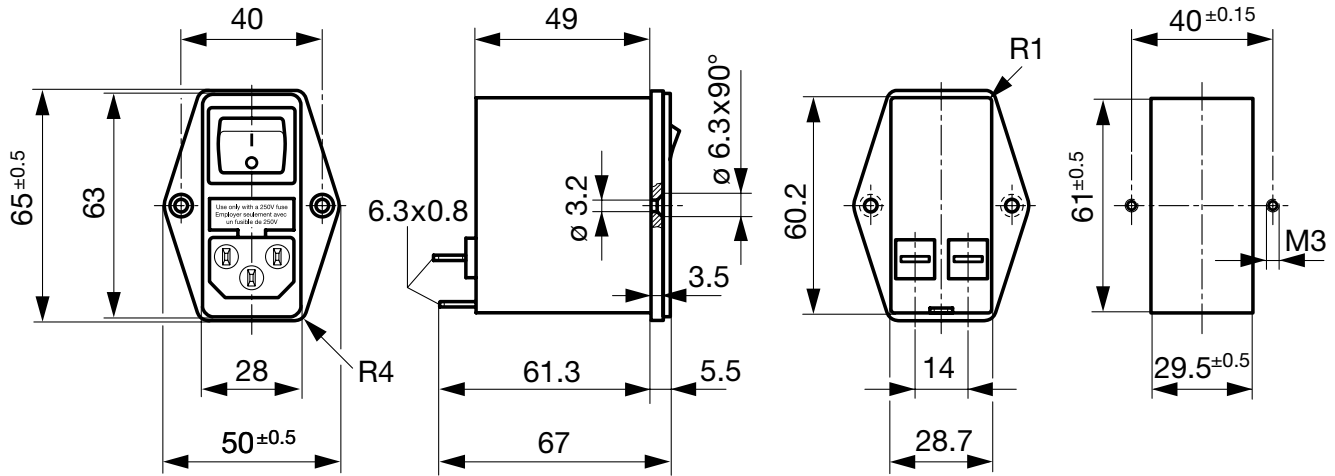
### Technical Data

|                           |   |
|---------------------------|---|
| Ratings IEC               | 1 - 10A @ Ta 40 °C / 250 VAC; 50Hz  |
| Ratings UL/CSA            | 1 - 10A @ Ta 40 °C / 125 VAC; 60Hz  |
| Leakage Current           | standard < 0.25mA (250V / 60Hz)   |
| Dielectric Strength       | > 1.7 kVDC between L-N<br>> 2.7 kVDC between L/N-PE<br>Test voltage (2 sec) |
| Allowable Operation Temp. | -25 °C to 85 °C   |
| Climatic Category         | 25/085/21 acc. to IEC 60068-1   |
| Degree of Protection      | from front side IP 40 acc. to IEC 60529                                     |
| Protection Class          | Suitable for appliances with protection class I acc. to IEC 61140           |
| Terminal                  | Quick connect terminals 6.3 x 0.8 mm  |
| Panel Thickness s         | Screw: max 8 mm<br>Mounting screw torque max 0.5Nm                          |
| Material: Housing         | Thermoplastic, black, UL 94V-0  |

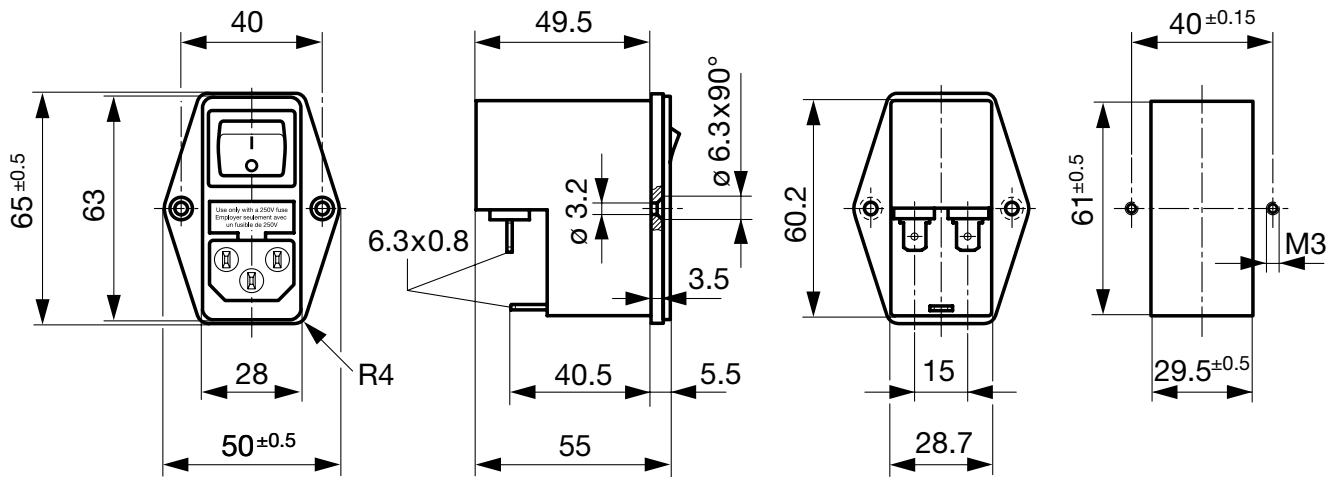
|                                   |   |
|-----------------------------------|---|
| Appliance-Inlet/-Outlet           | C14 acc. to IEC 60320,<br>UL 498, CSA C22.2 no. 42 (for cold conditions) pin-temperature 70 °C, 10A, Protection Class I |
| Fuseholder                        | 1-pole, Shocksafe category PC2 acc. to IEC 60127-6,<br>for fuse-links 5 x 20mm  |
| Rated Power Acceptance @ Ta 23 °C | 5 x 20: 1.6W (1 pole)   |
| Power Acceptance @ Ta > 23°C      | Admissible power acceptance at higher ambient temperature see derating curves   |
| Line Switch                       | 2-pole, non-illuminated, acc. to IEC 61058-1<br><a href="#">Technical Details</a>                                       |
| Line Filter                       | Standard Version, IEC 60939, UL 1283, CSA C22.2 no. 8<br><a href="#">Technical Details</a>                              |
| MTBF                              | > 1'700'000h acc. to MIL-HB-217 F   |

Dimension

Case 45



Case 50

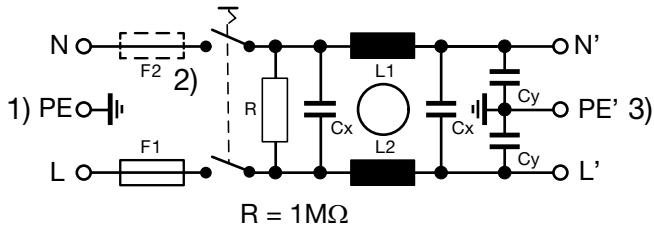


Technical Data of Filter-Components

| Rated Current [A] | Filter-Type          | Inductances L [mH] | Capacitance CX [nF] | Capacitance CY [nF] | R [MΩ] |
|-------------------|----------------------|--------------------|---------------------|---------------------|--------|
| 1                 | Standard Version     | 2 x 10             | 68                  | 2.2                 | 1      |
| 2                 | Standard Version     | 2 x 4              | 68                  | 2.2                 | 1      |
| 4                 | Standard Version     | 2 x 1.5            | 68                  | 2.2                 | 1      |
| 6                 | Standard Version     | 2 x 0.8            | 68                  | 2.2                 | 1      |
| 10                | Standard Version     | 2 x 0.3            | 68                  | 2.2                 | 1      |
| 1                 | Medical Version (M5) | 2 x 10             | 68                  | -                   | 1      |
| 2                 | Medical Version (M5) | 2 x 4              | 68                  | -                   | 1      |
| 4                 | Medical Version (M5) | 2 x 1.5            | 68                  | -                   | 1      |
| 6                 | Medical Version (M5) | 2 x 0.8            | 68                  | -                   | 1      |
| 10                | Medical Version (M5) | 2 x 0.3            | 68                  | -                   | 1      |

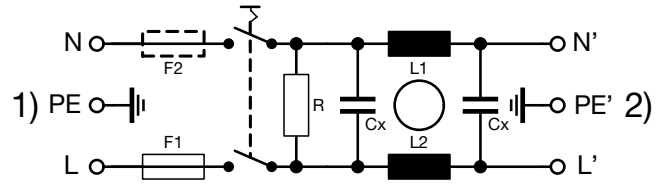
Diagrams

Standard version



- 1) Line
- 2) only FKI
- 3) Load

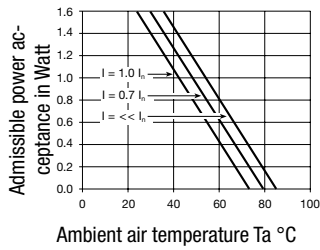
Medical version



- 1) Line
- 2) Load

Derating Curves

1-pole



Attenuation Loss

Standard version

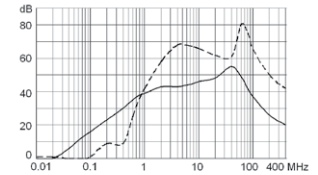
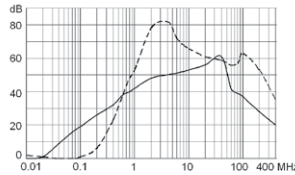
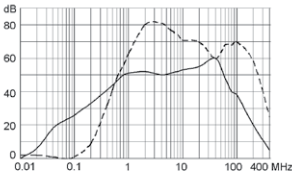
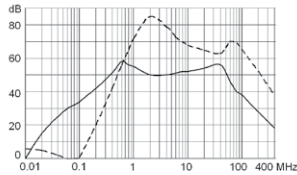
--- differential mode    \_\_\_\_ common mode

1 A

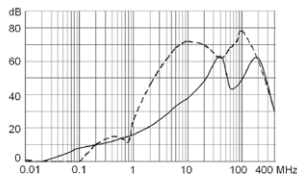
2 A

4 A

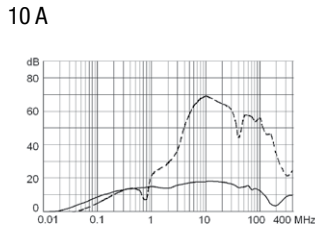
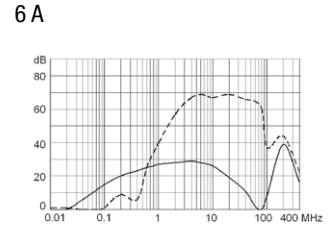
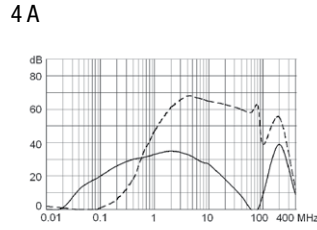
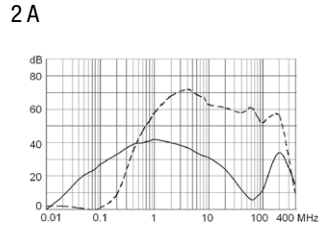
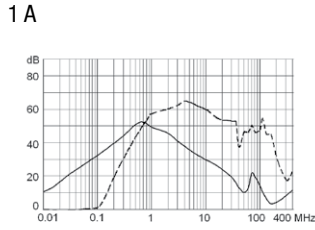
6 A



10 A



Medical version (M5)



All Variants

| Type | Rated Current [A] | Filter-Type          | Fuseholder | Line Switch | Housing | Material: Housing   | Order Number |
|------|-------------------|----------------------|------------|-------------|---------|---------------------|--------------|
| FKH  | 1                 | Standard Version     | 1-pole     | 2-pole      | 45      | Aluminum            | 4304.4041    |
| FKH  | 2                 | Standard Version     | 1-pole     | 2-pole      | 45      | Aluminum            | 4304.4042    |
| FKH  | 4                 | Standard Version     | 1-pole     | 2-pole      | 45      | Aluminum            | 4304.4043    |
| FKH  | 6                 | Standard Version     | 1-pole     | 2-pole      | 45      | Aluminum            | 4304.4044    |
| FKH  | 10                | Standard Version     | 1-pole     | 2-pole      | 45      | Aluminum            | 4304.4045    |
| FKH  | 1                 | Medical Version (M5) | 1-pole     | 2-pole      | 45      | Aluminum            | 4304.4046    |
| FKH  | 2                 | Medical Version (M5) | 1-pole     | 2-pole      | 45      | Aluminum            | 4304.4047    |
| FKH  | 4                 | Medical Version (M5) | 1-pole     | 2-pole      | 45      | Aluminum            | 4304.4048    |
| FKH  | 6                 | Medical Version (M5) | 1-pole     | 2-pole      | 45      | Aluminum            | 4304.4049    |
| FKH  | 10                | Medical Version (M5) | 1-pole     | 2-pole      | 45      | Aluminum            | 4304.4050    |
| FKH  | 1                 | Standard Version     | 1-pole     | 2-pole      | 50      | Nickel plated steel | 4304.4001    |
| FKH  | 2                 | Standard Version     | 1-pole     | 2-pole      | 50      | Nickel plated steel | 4304.4002    |
| FKH  | 4                 | Standard Version     | 1-pole     | 2-pole      | 50      | Nickel plated steel | 4304.4003    |
| FKH  | 6                 | Standard Version     | 1-pole     | 2-pole      | 50      | Nickel plated steel | 4304.4004    |
| FKH  | 10                | Standard Version     | 1-pole     | 2-pole      | 50      | Nickel plated steel | 4304.4005    |

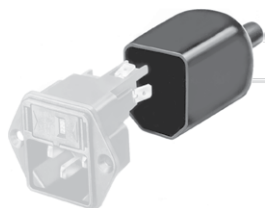
Most Popular.

Availability for all products can be searched real-time:<http://www.schurter.com/en/Stock-Check/Stock-Check-SCHURTER>

Packaging unit 10 Pcs

Accessories

Description



Assorted Covers  
Rear Cover

Mating Outlets/Connectors

Category / Description



[Appliance Outlet Overview complete](#)

|   |      |
|---|------|
| IEC Appliance Outlet F, Screw-on Mounting, Front Side, Solder Terminal                            | 4787 |
| IEC Appliance Outlet F, Snap-in Mounting, Front Side, Solder or Quick-connect Terminal            | 4788 |
| IEC Appliance Outlet F or H, Screw-on Mounting, Front Side, Solder, PCB or Quick-connect Terminal | 5091 |

[Appliance Outlet further types to FKH](#)



[Connector Overview complete](#)

|  |        |
|--|--------|
| IEC Connector C15A, Rewireable, Straight | 0102   |
| IEC Connector C15A, Rewireable, Straight | 0102-G |
| IEC Connector C15A, Rewireable, Angled   | 0112   |
| IEC Connector C13, Rewireable, Angled    | 4012   |
| IEC Connector C13, Rewireable, Straight  | 4022   |

[Connector further types to FKH](#)