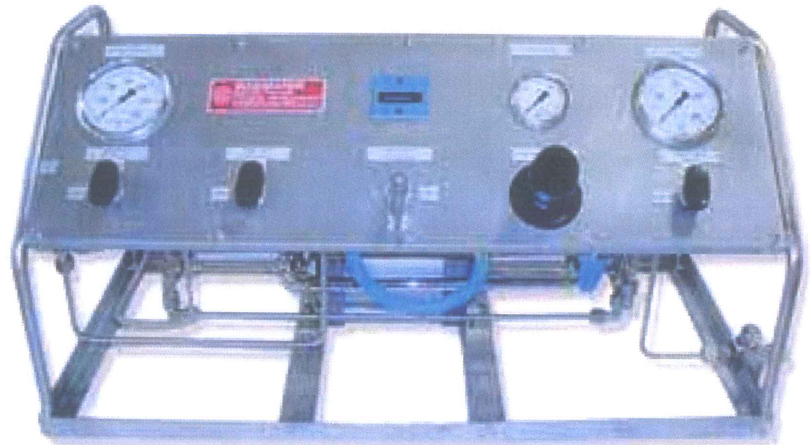


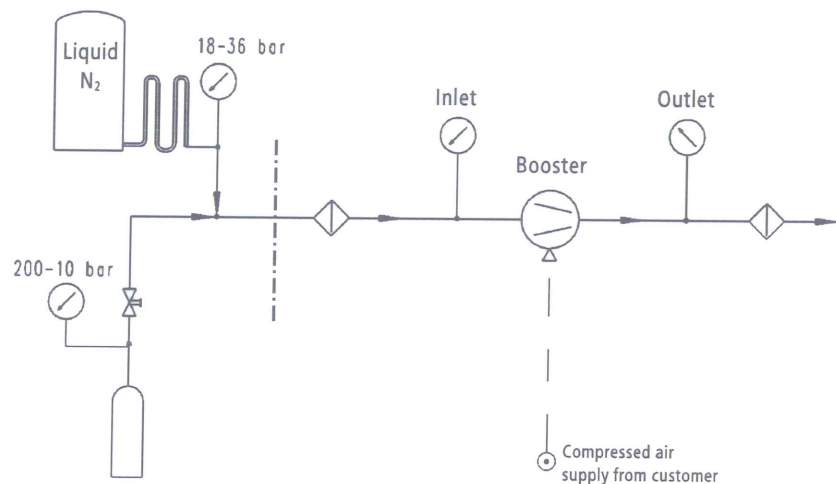
### Model VP/70/700/35

- Wide range of application
- Compact design
- Portable unit
- Easy to operate
- Oil and lubrication free compression
- Dry running
- No electrical auxiliary energy is needed



This booster station is designed for a wide range of application. I. e. pressure tests can be realized, gas cylinders filled or accumulators recharged.

To operate this system, the gas inlet, the gas outlet and the drive air have to be connected. Other installations are not necessary. Since the components are reduced to a minimum, an easy and reliable operation can be guaranteed.



### Technical features

Outlet pressure	75 – 700 bar (1,087 – 10,150 psi)
Flow capacity at an inlet pressure of 10 bar (145 psi)	70 l <sub>N</sub> /min (2.47 SCFM) at 200 bar (2,900 psi) outlet pressure
Flow capacity at an inlet pressure of 15 bar (217 psi)	103 l <sub>N</sub> /min (3.63 SCFM) at 200 bar (2,900 psi) outlet pressure
Time of operation	50 %
Gas inlet pressure	7 – 35 bar (101 – 507 psi), but max. 3.5* air drive pL
Air drive pressure	1 – 10 bar (14.5 – 145 psi)
Air consumption	400 – 1,980 l <sub>N</sub> /min (14.13 – 69.92 SCFM)
Connection: Gas inlet	1/2 BSP
Connection: Gas outlet	1/4 BSP
Connection: Air drive	1/2 BSP
Panel	Stainless steel
Dimensions (W x D x H)	850 X 410 X 410 mm
Net weight	28 kg